



SPRINT 100

FORCE OF NATURE

NEW ERA OF COMPACTION

PAVER ROLLER COMPACTOR

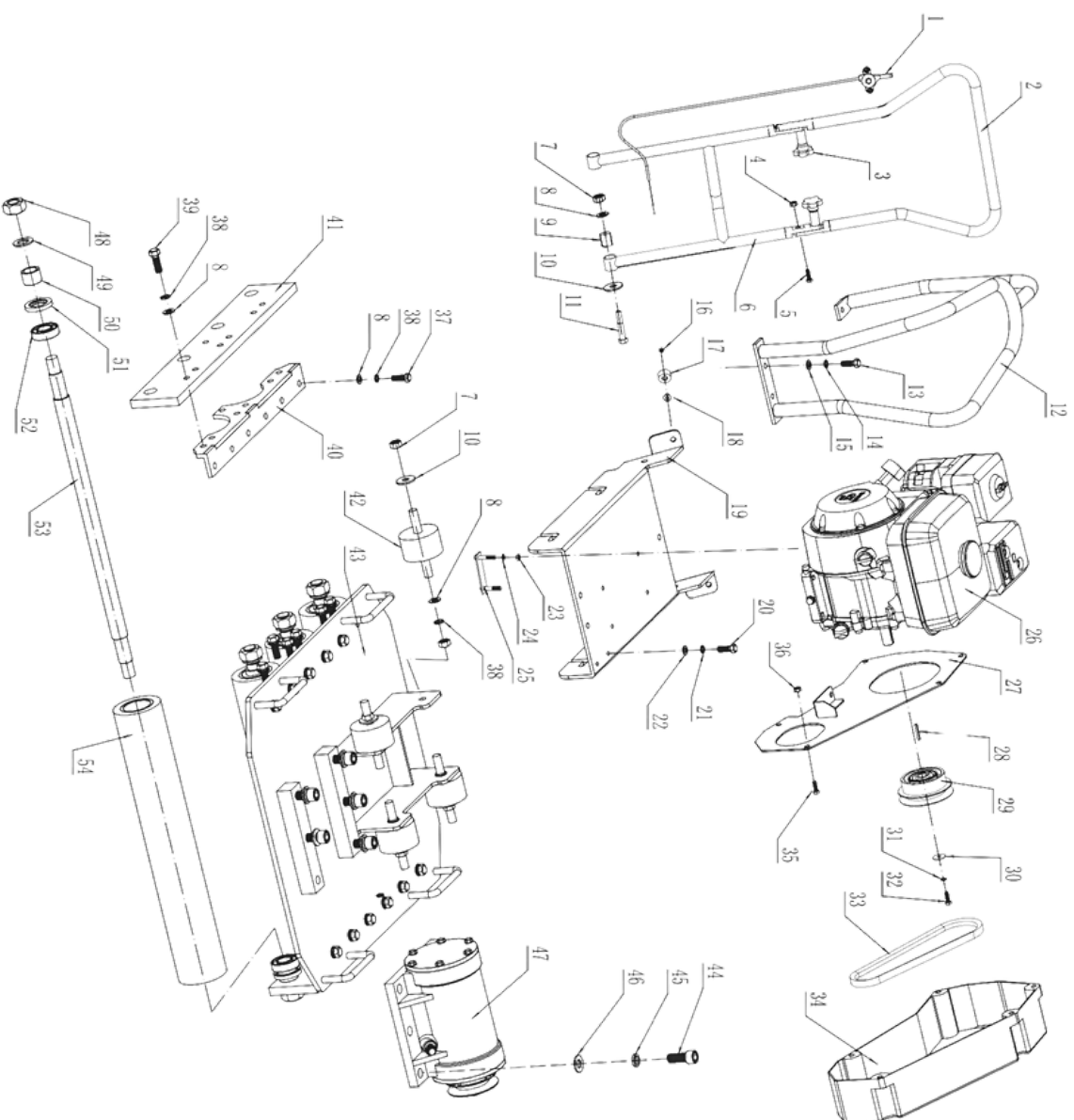
PARTS MANUAL



Distributed by MITO Distributions INC.

SPRINT 100

Figure 1



PARTS LIST

No.	Description	Specification	Quantity
1	Throttle Switch	-	1 set
2	Upper Handle	-	1 pc
3	Bakelite Bolt	M10*30	2 pcs
4	Lock Nut	M10	2 pcs
5	Flange Bolt	M10*35	2 pcs
6	Lower Handle	-	1 pc
7	Lock Nut	M12	6 pcs
8	Flat Washer	Ø12	32 pcs
9	Handle Rubber Cover	-	2 pcs
10	Large Flat Washer	12*35	6 pcs
11	Hex Bolt	M12*70	2 pcs
12	Protective Frame	-	1 pc
13	Hex Bolt	M10*35	3 pcs
14	Spring Washer	Ø10	3 pcs
15	Flat Washer	Ø10	3 pcs
16	Lock Nut	M8	2 pcs
17	Small Handle Shock Absorber	-	2 pcs
18	Cross Recessed Countersunk Head Screw	M8*20	2 pcs
19	Power Panel	-	1 pc
20	Hex Bolt	M8*25	3 pcs
21	Spring Washer	Ø8	3 pcs
22	Flat Washer	8*22	3 pcs
23	Lock Nut	M8	4 pcs
24	Flat Washer	-	4 pcs
25	Power Press Plate	-	2 pcs
26	Power Unit	-	1 unit
27	Dust Plate	-	1 pc
28	Flat Key	5*40	1 pc
29	Clutch Assembly	-	1 pc
30	Tapered Flat Washer	Ø8	1 pc
31	Spring Washer	Ø8	1 pc
32	Hex Bolt	M8*30	1 pc
33	V-Belt	B-850	1 pc
34	Belt Cover	-	1 pc
35	Flange Bolt	M8*40	5 pcs
36	Flange Nut	M8	5 pcs
37	Hex Bolt	M12*30	12 pcs
38	Spring Washer	Ø12	30 pcs
39	Hex Bolt	M12*35	14 pcs

Figure 1 / Silverback Sprint 100

PARTS LIST

No.	Description	Specification	Quantity
40	Connecting Plate	-	2 pcs
41	Side Plate	-	2 pcs
42	Baseplate Shock Absorber	-	1 pc
43	Baseplate	-	1 pc
44	Hex Socket Bolt	M16*40	4 pcs
45	Flat Washer	Ø16	4 pcs
46	Spring Washer	Ø16	4 pcs
47	Vibrator Assembly	-	1 set
48	Lock Nut	M22	8 pcs
49	Flat Washer	Ø22	8 pcs
50	Roller Sleeve	-	8 pcs
51	Oil Seal (Nitrile Rubber)	305210	8 pcs
52	Fully Sealed Bearing	6205-2RS	8 pcs
53	Roller Shaft	-	4 pcs
54	Roller	-	4 pcs



SILVERBACK Machinery and Power Equipment.

Pioneering the future of compaction, we pride ourselves on introducing groundbreaking technologies that redefine the very essence of power in our machinery. Experience a new era where strength meets innovation, setting your projects on a path to perfection.

SILVERBACK understands that keeping a job site running smoothly means having not only the right equipment but also a comprehensive stock of spare parts available at all times. By making sure these critical components are on hand whenever needed, SILVERBACK helps prevent downtime, ensuring that operations remain efficient with the help of these documentations and parts books.





SILVERBACK
MACHINERY · EQUIPMENT

PARTS MANUAL

THIS MANUAL MUST ACCOMPANY THE EQUIPMENT AT ALL TIMES.

Model: SILVERBACK SPRINT-100 Paver Roller Compactor
Revision #2 (1/9/24)

This manual MUST accompany the equipment at all times. This manual is considered a permanent part of the equipment and should remain with the unit if resold.

The information and specifications included in this publication were in effect at the time of approval for printing. Illustrations, descriptions, references and technical data contained in this manual are for guidance only and may not be considered as binding. MITO Distributions INC. reserves the right to discontinue or change specifications, design or the information published in this publication at any time without notice and without incurring any obligations.

PARTS SUPPORT:

Email: contact@distributionsmito.com

Web: www.mitodistributions.com/contact

To find the latest revision of this publication or associated parts manual, visit our website at:
www.mitodistributions.com/silverback

